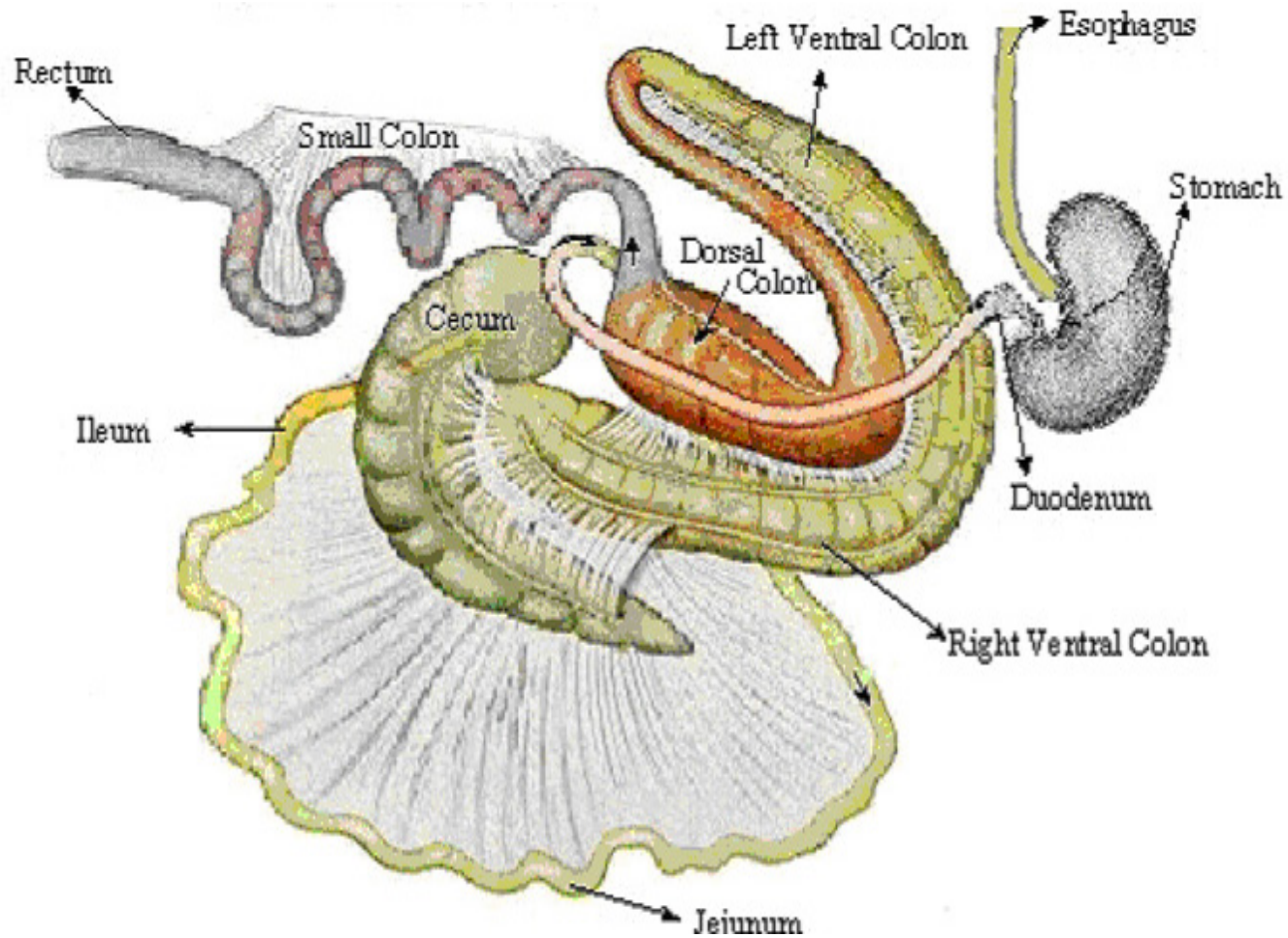


**Middle California Region USPC
Upper Level Horse Management Education
The Equine Digestive System**



Equine Digestive Tract – Function

Type	Fore Gut	Capacity	% of Gastrointestinal System
Enzymatic Digestion	Stomach	8 – 15 litres	8%
	Duodenum, Jejunum, Ileum (70 feet or 21 meters)	68 litres	30%
Type	Hind Gut	Capacity	% of Gastrointestinal System
Microbial Digestion	Cecum (4 feet or 1.2 meters)	28 – 36 litres	15%
	Large Colon (Right Ventral, Left Ventral, and Dorsal Colons) 10 – 12 feet or 3 – 3.6 meters)	86 litres	38%
	Small Colon (10 – 12 feet or 3 – 3.6 meters)	16 litres	9%